



Dumri Small Hydro Power Project

Preliminary Feasibility Report



1.0 INTRODUCTION

1.1 General

The state of Jharkhand almost comprises hilly terrain mostly of Chhotanagpur plateau and 30% of total area (79,714 sq km) is covered with forest. The normal annual rainfall is 1400 mm. These geographical factors provide a number of Small Hydro Power (SHP) potential sites at waterfalls and rapids in the streams and rivers of Jharkhand.

About 80% of villages in the Jharkhand are yet to see electrical power. It is prudential to harness the SHP potential sites for the electrification of its nearby villages.

In view of above, Jharkhand Renewable Energy Development Agency (JREDA) has entrusted MECON LIMITED for preparation of Preliminary Feasibility Report (PFR) for development of Small Hydro Power (SHP) at 22 sites in Jharkhand.

Dumri SHP site is one of 22 SHP sites, located in the south-western part of Jharkhand. It is situated in the Block Dumri of District Gumla. The Dumri SHP is proposed to utilize the flow of Basa Nadi near village Basatoli.

1.2 Benefits of Small Hydro Power

Harnessed energy has become a symbol of growth and instrument for development. Electric power particularly the small hydro power is a renewable, economically attractive, environment friendly, non-polluting and environmentally benign source of energy. Moreover, the Small Hydro Power is submergence free and has short gestation period. These benefits of SHP have now been sufficiently recognised. The need of the project comes from the benefits of SHP and utilization of resources.



Dumri Small Hydro Power Project

Preliminary Feasibility Report



1.3 Aim of report

Development of small hydro projects requires many stages of technical and financial study to determine if a site is technically and economically feasible. The viability of project is very site specific.

PFR is the first stage of work based on which Detailed Survey and Investigation (DSI) is recommended.

The aim of the report is to examine the adequacy for proceeding to the next stage of work; Detailed Survey & Investigation.

1.4 Scope of report

PFR covers the following activities.

- a) Topo sheet study for tentative planning of general layout of project, delineation of drainage area, and for obtaining idea on the access to site.
- b) Site visit for identification of location of the site, preliminary layout of SHP, preliminary assessment of head, duration of water availability in the stream, and electrification status of nearby villages.
- c) To examine the adequacy for proceeding to the next stage of development.

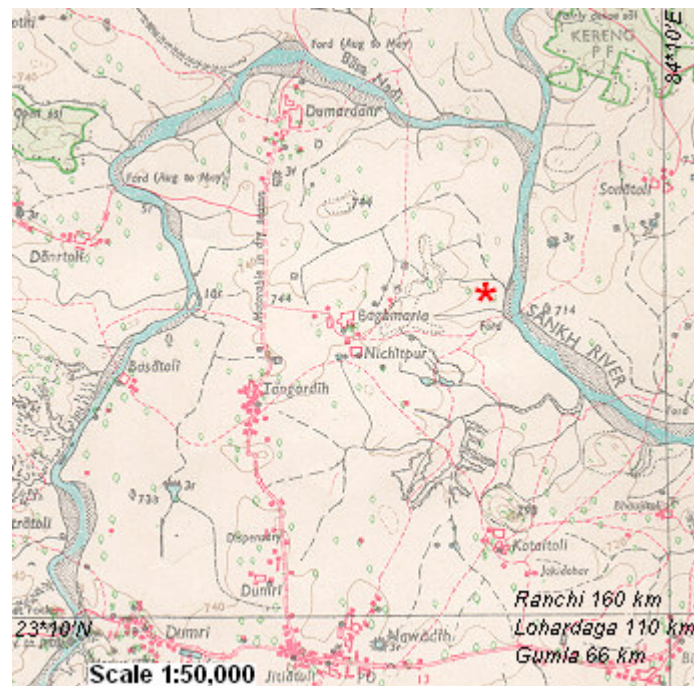


Dumri Small Hydro Power Project

Preliminary Feasibility Report



2.0 INDEX MAP





Dumri Small Hydro Power Project

Preliminary Feasibility Report



3.0 GENERAL INFORMATION

3.1 Location of site

The location of the site is shown in the Index Map. The details of location are as follows.

- a) Village: Baghmara
- b) Block: Dumri
- c) District: Gumla
- d) State: Jharkhand
- e) Topo sheet No.: 73 A/4
- f) Latitude: 23°11'20" N
- g) Longitude: 84°09'13" E

3.2 Access to site

The access to Dumri SHP site from Dumri is highlighted in the Index Map. The access to Dumri from the State capital, District HQ and the nearest Railway Station are as follows.

Place		Type of approach	Distance (approx)
Origin	Destination		
Ranchi (State Capital)	Gumla (District HQ)	National Highway (NH 23)	100 km
Lohardaga (Nearest Rly Stn)	Gumla	State Highway	55 km
Gumla	Dumri (Block HQ)	State Highway	66 km

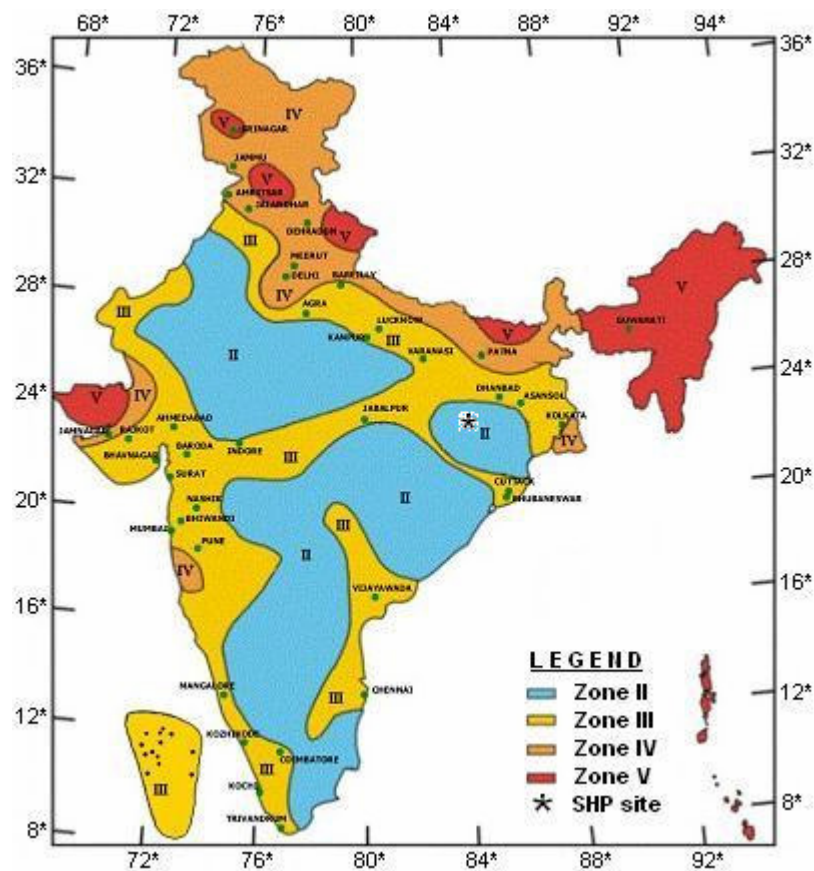
The nearest railway station Lohardaga is in Ranchi Lohardaga section of South Eastern Railway. The nearest airport is at Ranchi.

3.3 Electrification status of nearby villages

There are about 20 villages having about 1000 houses nearby the SHP site, which do not have access to electrical power. Even the Block HQ Dumri does not have access to electrical power.

3.4 Geology & Seismicity

The site is located in Chotanagpur plateau, which is composed mainly of Archaic Gneiss and Granite rocks. The rocks are very old, hard and stable. Jharkhand has no moderate to large earthquakes in recent past, only small tremors have occurred in the region. According to the seismic hazard map of India updated by the Bureau of Indian Standards (BIS) in 2000, all of the southern districts of Jharkhand lie in Zone II.





Dumri Small Hydro Power Project

Preliminary Feasibility Report



4.0 HYDROLOGY

4.1 River / Stream

The Dumri SHP will utilize the water from Basa Nadi near village Basatoli.

- a) Stream / river: Basa Nadi
- b) Source: Rain fed
- c) Catchment area: 150 sq km (approx)
- d) River basin: Sankh river

4.2 Catchment area

The catchment area is delineated on the topo sheet as shown below.





Dumri Small Hydro Power Project

Preliminary Feasibility Report



4.3 Rainfall

The monthly rainfall (mm) of Dumri is given in the table below.

Monthly Rainfall (mm) of Dumri

Month	2000	2001	2002	2003
January	7	0	13	11
February	0	0	6	4
March	9	0	0	10
April	14	4	0	2
May	0	2	5	3
June	467	443	90	86
July	258	241	208	349
August	376	371	349	350
September	210	110	209	315
October	39	38	39	36
November	55	56	58	48
December	0	5	0	5
Total	1436	1269	977	1218

4.4 Flow

The Dumri SHP site was visited during the 4th week of November 2004, and the flow of Basa Nadi near village Basatoli was measured as 0.643 m³/s. As understood from local people and seen from the rainfall data, the river is perennial, though there is lean flow only during summer season.

The flow data of Sankh river near village Basatoli are not available. However, the following two bases are available to estimate the flow-duration.



Dumri Small Hydro Power Project

Preliminary Feasibility Report



- Mean flow with catchment area of 22 streams scattered over Chhotanagpur plateau area in Jharkhand.
- Model of flow-duration, based on data of 22 streams scattered over Chhotanagpur plateau area in Jharkhand.

The flow-duration of Basa Nadi near village Basatoli has been estimated on above two bases and shown in the table below.

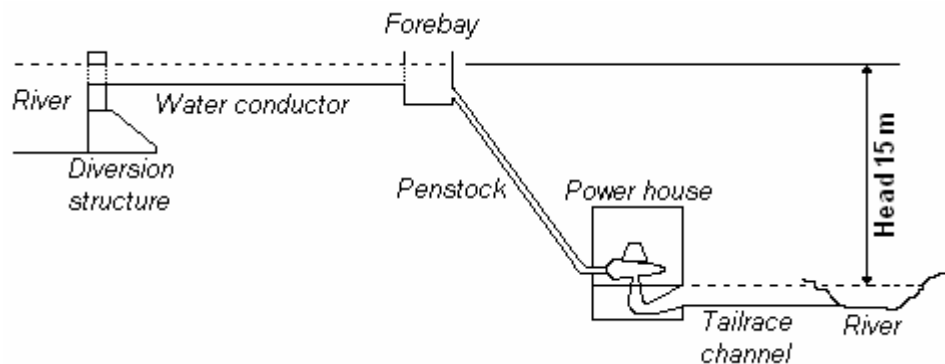
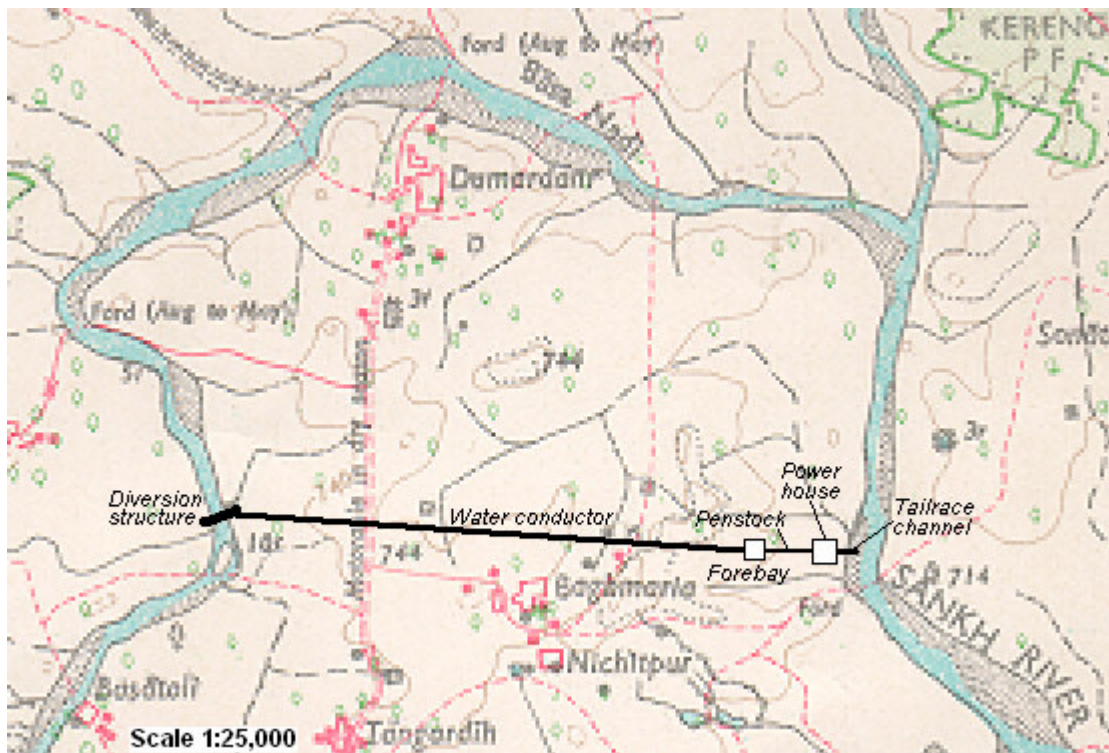
Flow-duration of Basa Nadi near village Basatoli

Exceedence Time (%)	Flow (m ³ /s)
25	1.820
50	0.669
60	0.487
75	0.303
80	0.254
90	0.167

It has found that the flow measured (0.643 m³/s) is close to the flow of exceedence time 50%, which indicates the correctness of flow-duration.

5.0 PRELIMINARY LAYOUT

The preliminary layout is outlined below in the relevant portion of the Toposheet. During the site visit the head was measured as 15m and is indicated in the schematic sketch.



Schematic sketch



Dumri Small Hydro Power Project

Preliminary Feasibility Report



6.0 POWER POTENTIAL

6.1 Power

The flow for different exceedence times is given in column (2) of the table below. The net head is worked out as 14.25m, assuming the head loss of 5%, and is shown in column (3). Assuming the overall plant efficiency of 85%, the power potential is worked out and shown in column (4) of the following table.

(1)	(2)	(3)	(4)
% Exceedence Time	Flow (cumec)	Net Head (m)	Power Potential (kW)
25	1.820	14.25	216
50	0.669	14.25	80
60	0.487	14.25	58
75	0.303	14.25	36
80	0.254	14.25	30
90	0.167	14.25	20

6.2 Conclusion

The SHP site preliminarily seems to have small potential, but seeing the nature of rainfall and availability of water in the river almost through out the year, with storage the power potential can be increased. Also exact availability of water for power generation over different periods of a year will be measured during Detailed Survey and Investigation (DSI).

Further in view of non-availability of electrical power to the almost all villages of the block, including the Block HQ, whatever potential is available, is needed to be urgently harnessed.

Therefore, it is recommended to carry out the next stage of development of The SHP, namely; Detailed Survey and Investigation (DSI).